



UNI-TUGGER

The UNI-Tugger is the latest addition to our globally recognized BTE series. It is designed to accommodate all popular battery sizes and roll-out heights and is equipped with our powerful electromagnet; perfect for low-volume high-efficiency battery changing. The UNI-Tugger also has built-in safety features, including a linear actuator system to supplement the lifting range.

All lift and extraction functions are electrically powered, and the logical push-button controls simplify operation. The UNI-Tugger fulfills the industry's need for a "flexible" mobile battery changer with minimal maintenance requirements.

GET IN TOUCH

info@carneybatteryhandling.com
www.carneybatteryhandling.com

Tel: 1.905.564.0303
Toll free: 1.866.THE.BULL

2A - 14 Reagan Road
Brampton Ontario L7A 1B9

UNI-Tugger

Benefits

- ✓ Compatible with a variety of sizes and roll-off heights
- ✓ Offers an “off the shelf” solution
- ✓ Permanently bolted to host pallet truck
- ✓ Can be held in stock due to flexible designs
- ✓ Competitively priced

Features

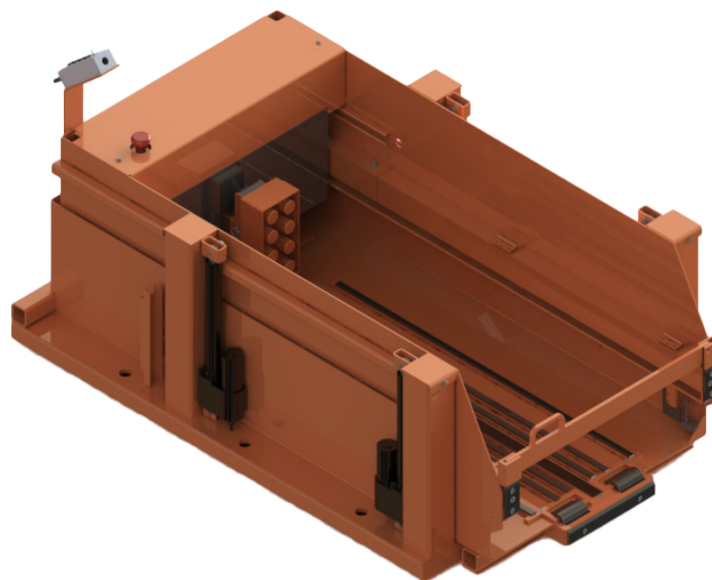
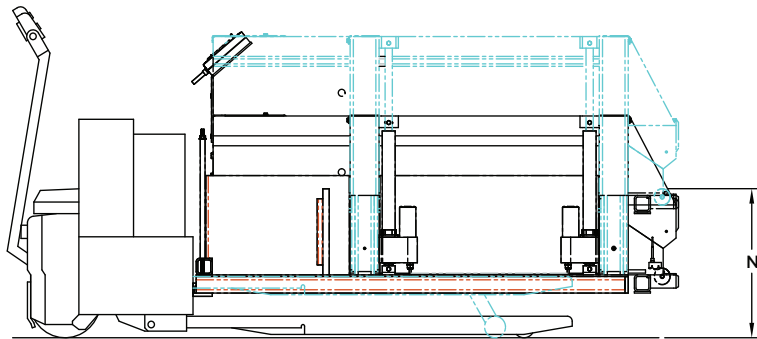
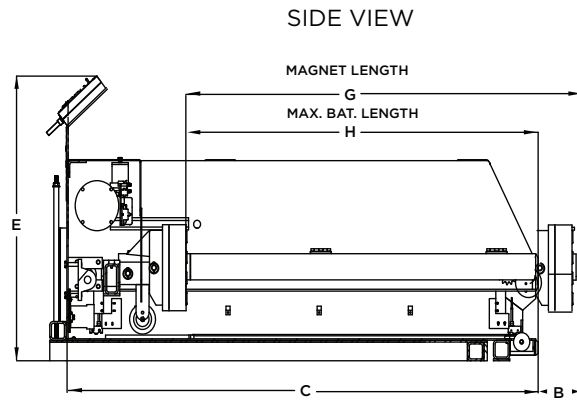
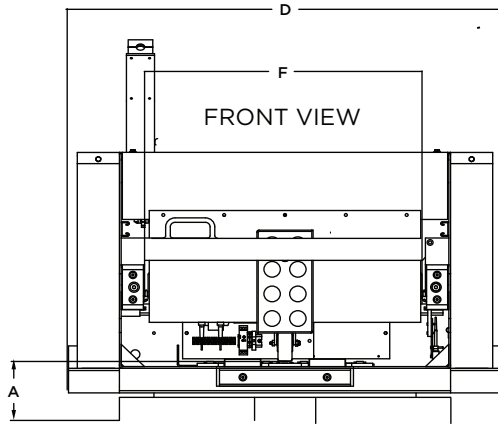
- ✓ 5-year warranty on electromagnet!
- ✓ Roll-out height range
 - *Designed to be used with customer’s own host pallet truck requiring no additional power to operate the UNI-Tugger.*
- ✓ Host pallet truck will accommodate the forks of any standard pallet truck starting from 59”/1499mm length to 22”/558 mm in wide.
- ✓ Integrated lift using linear actuator system
 - *These integrated actuators have a life cycle of 500 million millimetres*
- ✓ Simple and logical controls:
 - *Forward/reverse, raise/lower controls by host truck*
 - *An additional lift of 13.25”/337mm is built into UNI-Tugger*
 - *Magnet bridge travel*
 - *Magnet power on/off switch with 5-minute time-out*

Available Options

OPTIONS
Custom colours available
Fold-down battery guide for narrow batteries
Front safety gate
10-pole magnet available for batteries over 3,530 lbs
Variable speed joystick
Emergency stop controls

UNI-Tugger

DIMENSIONS



UNI-Tugger

SPECIFICATIONS

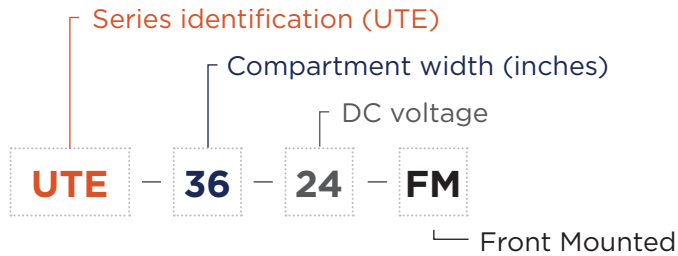
DESCRIPTION		STANDARD	METRIC
1	Maximum load capacity	4997 lbs	2267kg
2	Powerpack type	Gear reduced electric	
3	Motor type	Permanent magnet DC	
4	Electric motor HP	1HP	
5	System voltage	24 Volt DC	
6	Magnet size/pole	6.5" × 11.5" / 8	152 x 292mm / 8
7	Standard colors	Blue or Orange	
8	Required host truck capacity	1801 lbs + battery weight	817kg + battery weight
9	Lift speed	0.033m/s	
10	Lift stroke of host truck	4.8"	120 mm

BASIC DIMENSIONS (REFER TO DIAGRAM ON PAGE 4)		STANDARD	METRIC
A	Minimum roll-out height	Pallet lowered height +1.25"/32 mm	
B	Magnet reach	Gear reduced electric	
C	Overall length	75"	1905 mm
D	Overall width	52.25"	1327 mm
E	Overall height	37.63"	955.8 mm
F	Battery compartment width	6.5" × 11.5" / 8	152 x 292 mm / 8
G	Magnet travel	57.88"	1470 mm
H	Maximum battery length	43"	1092 mm
I	Maximum battery width	35"	889 mm
J	Minimum battery width	6"	152 mm
K	Maximum battery height	32"	813 mm
L	Minimum battery height	13"	331 mm
M	Minimum required pallet truck fork length	59"	1498.6 mm
N	Maximum roll-out height	Pallet raised height +13.25" / 337 mm	
O	Rated draw bar pull	1,800 lbs	818 kg

If the safety gate option is fitted, all maximum battery lengths will be reduced by 1.25 in/ 32mm

Model/Part Number Breakdown

Example: UTE-36-24-FM



Product Images



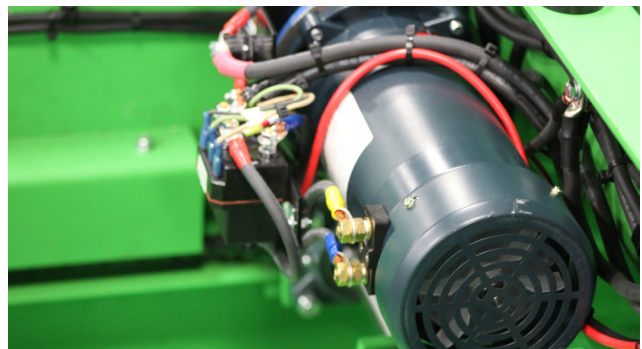
UNI-Tugger joystick



Back view - lifted



Side view - UNI-Tugger with pallet truck attached



Electric motor

GET IN TOUCH

info@carneybatteryhandling.com
www.carneybatteryhandling.com

Tel: 1.905.564.0303
Toll free: 1.866.THE.BULL

Due to continuous product improvements, specifications are subject to change without notice. Some systems and features shown may be optional at extra cost.

CBH_UTE_NA_R011